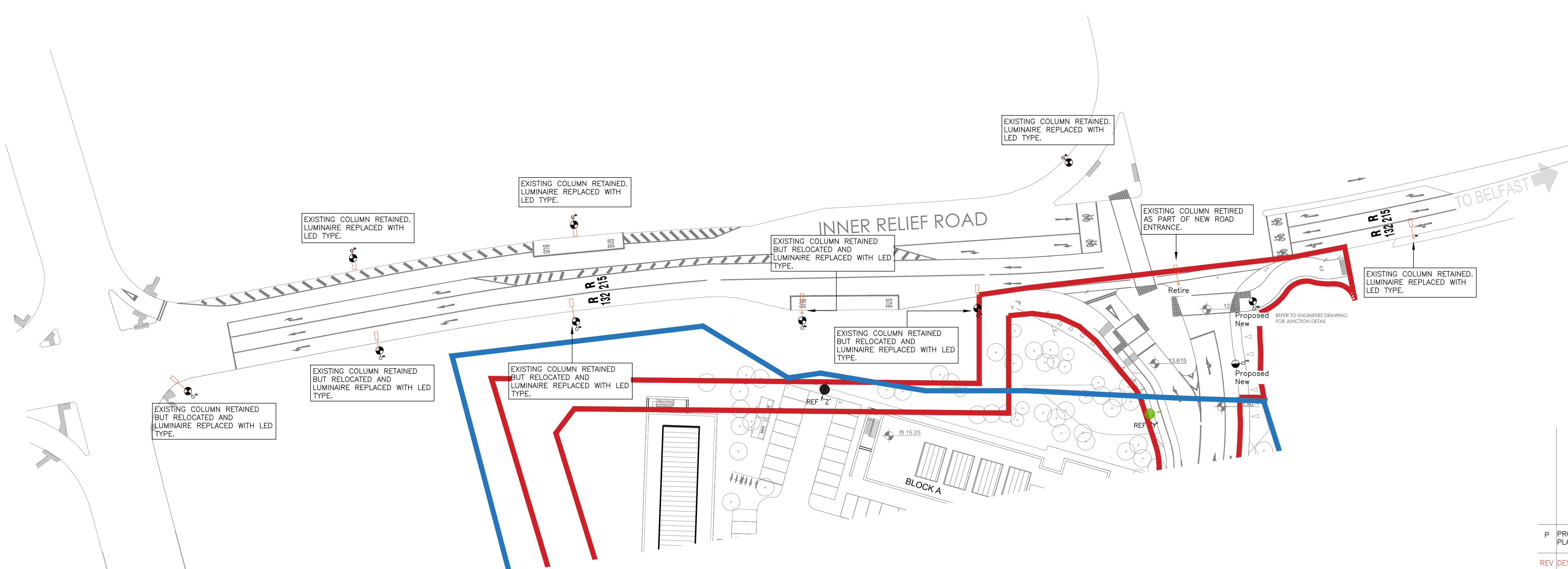


THIS DRAWING IS FOR INFORMATION PURPOSES ONLY. THE CONTRACTOR SHALL BE RESPONSIBLE FOR PRODUCING WORKING DRAWINGS

Roadway designed to P1 lighting class. Cycle track designed in accordance with ILP Technical Report No.23.

Assumed Environmental Zone – E3/E4 and 6 yearly cleaning regime lead to an MF value of 0.83.

- Luminaire A – 10m mounting height column complete with 2m bracket arm complete with side entry mounted Thorn R2L2 M 72L70 EWR 740 CLO CL1 19.94klm. Luminaires installed at 0° tilt.
- Luminaire B – Location of Existing Street Light.
- Luminaire C – 10m mounting height columns with 2m bracket arm complete with side entry mounted Thorn R2L2 M 60L70 EWC 740 CLO CL1 16.63klm. Luminaires installed at 0° tilt.
- Luminaire D – Proposed 6m mounting height column complete with post top mounted Thorn R2L2 S 12L35 WS 740 CLO CL1 1.97klm. Luminaires installed at 0° tilt.
- DENOTES LUMA LED LUMINAIRE MOUNTED ON 5.0M HIGH OCTAGONAL COLUMN POST TOP.
- PROPOSED 74W LED COLUMN MOUNTED LUMINAIRE
- PROPOSED 15W LED COLUMN MOUNTED LUMINAIRE
- PROPOSED 15W LED COLUMN MOUNTED LUMINAIRE
- PROPOSED 40W LED COLUMN LUMINAIRE



P	PROVISIONAL PUBLIC LIGHTING FOR PLANNING	DS	SF	FEB19
---	--	----	----	-------

REV	DESCRIPTION	DRN	CKD	DATE

ISSUE PRELIMINARY STAGE



NATURALLY INNOVATIVE CONSULTING ENGINEERS

Belfast +44 (0)28 90331700
 Castleblayney +353 (0)42 9749570

Registered www.semplemckillop.com admin@semplemckillop.com

PROJECT TITLE
 FINNABAIR SOUTH

DRAWING TITLE
 PROPOSED PUBLIC LIGHTING REALIGNMENT AT ENTRANCE TO DEVELOPMENT – PLANNING

DRAWING REFERENCE
 1611-SMK-ZO-SITE-DR-ME-02

DATE	DRAWN	CHECKED	PAGE & SCALE
FEB19	DS	SF	A1 1:500