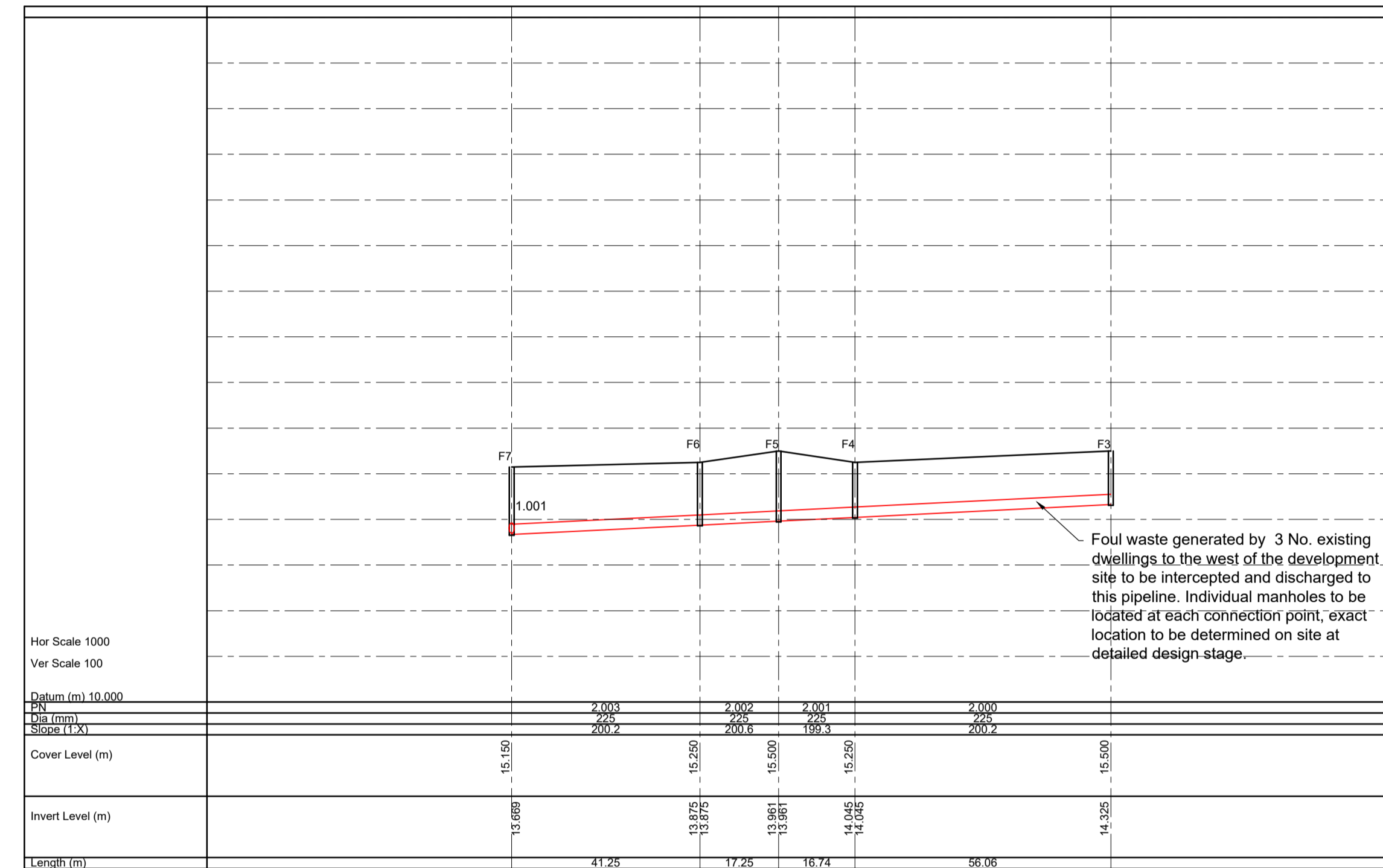



Foul Sewer Pipelines 1.000 to 1.004 Scale: 1:1000 Horizontal, 1:100 Vertical



Foul Sewer Pipelines 2.000 to 2.003 Scale: 1:1000 Horizontal, 1:100 Vertical

REV.	AMENDMENT	DATE	BY
Project: <b>Strategic Housing Development at Finnabair South, Inner Relief Road/R215, Dundalk, Co. Louth</b>			
Title: <b>Proposed Foul Drainage Longsections</b>			
Client/Architect: <b>JC Van Dijk/Van Dijk Architects</b>			Drawn: <b>c.macg</b>
 CONSULTING ENGINEERS CHARTERED STRUCTURAL AND CIVIL ENGINEERS			Checked: <b>cb</b> Date: <b>Feb'19</b> Scale: <b>1:1000 @ A1</b> Dwg. No.: <b>18027/C07B</b>
Village Green, Birch's Lane, Blackrock, Co. Louth, A91 H283, ROI Tel: +353 4293 21186 Fax: +353 4293 23786 email: <a href="mailto:inbox@cba.ie">inbox@cba.ie</a> website: <a href="http://www.cba.ie">www.cba.ie</a>			
<b>B Issued for SHD</b>		<b>04 03 19</b>	<b>c.macg</b>
<b>A For Pre-planning review by Irish Water</b>		<b>11 02 19</b>	<b>c.macg</b>